

1471 Capital Circle NW, Ste #13
Tallahassee, FL. 32303
850-580-4026 www.turf-tec.com

Troubleshooting Clegg Control Unit Batteries

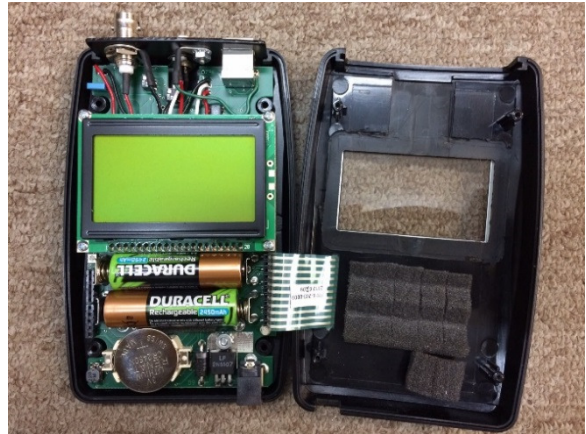
If the Clegg control unit will not hold a charge, or if the unit only works when it is plugged into an external power source, follow the directions below:

To check the Clegg Batteries, you can follow these steps:

1. Remove outer rubber cover on control unit.
2. Remove the 4 screws on the back of control unit.
3. Remove back cover (**Open it like a clamshell, right to left as shown in photo**)

Note: * There is a ribbon cable inside the control unit located on the left side (when unit is face down) that can be easily separated from its mount. The cable can be plugged back into its mount but it is difficult. *See picture

4. Check the rechargeable batteries to make sure that they are in the correct position and making good contact.
5. Make sure the ribbon cable is properly seated and not pinched between the top and bottom lid before closing the unit.
6. Close unit and retest.



Also, if the unit will still not hold a charge, you can use standard AA batteries, just **BE SURE NOT TO TRY TO CHARGE non-rechargeable batteries because they will explode**, ruining the unit.

Always use the power inverter provided with the Clegg unit to insure proper charging and prevent damage to the re-chargeable batteries.

Replacement batteries can be purchased from Turf-Tec International.